



**Organization for Security and Co-operation in Europe
Secretariat**

EEF.IO/16/08/Add.1

21 May 2008

ENGLISH only

Conference Services

The 16th Meeting of the OSCE Economic and Environmental Forum

**“Maritime and inland waterways co-operation in the OSCE area:
Increasing security and protecting the environment”**

Part 2 / Prague, 19 – 21 May 2008

**Plenary Session V
Enhancing good governance and promoting maritime and inland
waterways co-operation**

Please find attached the presentation by Mr. Daniel Valensuela, Deputy Director,
International Office for Water, International Network of Basin Organizations.

Office International de l'Eau
PARIS

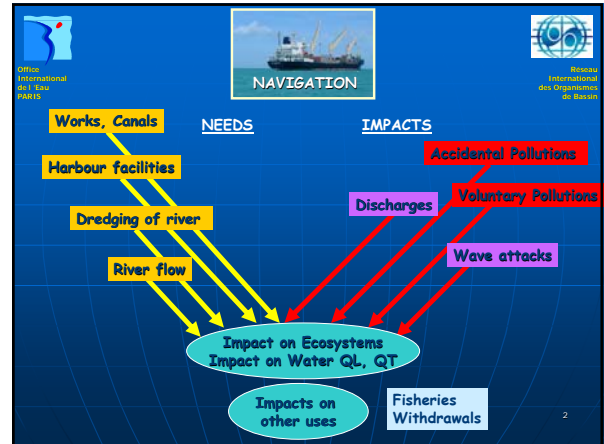
Redeau International des Organismes de Bassin

IWRM at Basin level

Prague
21 May 2008

Daniel VALENSUELA
Deputy General Manager
International Office for Water
Permanent Technical Secretary
INBO

1



Office International de l'Eau
PARIS

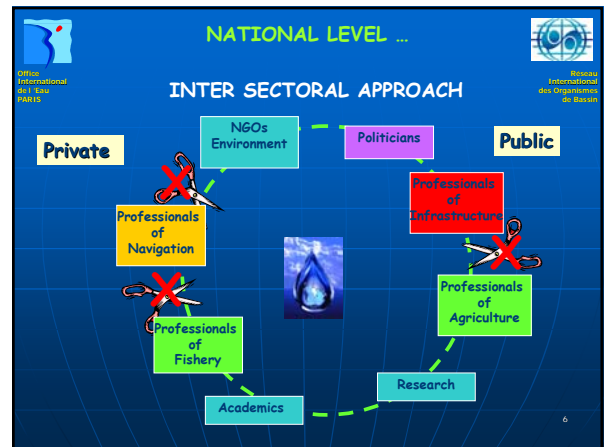
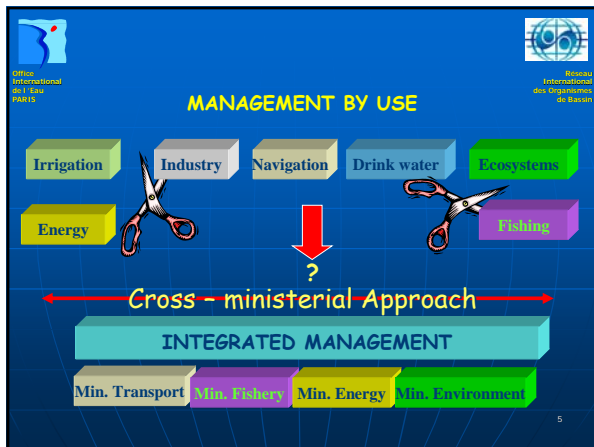
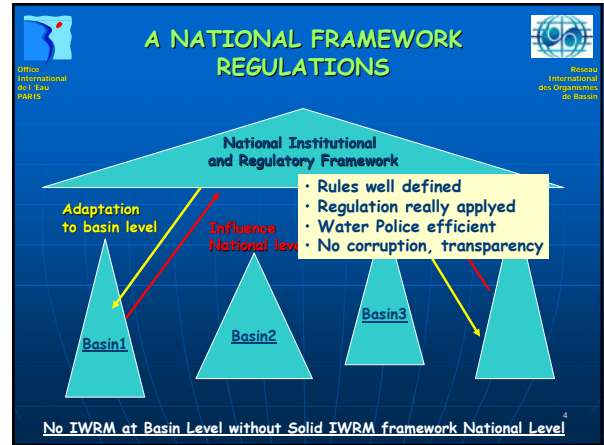
Redeau International des Organismes de Bassin

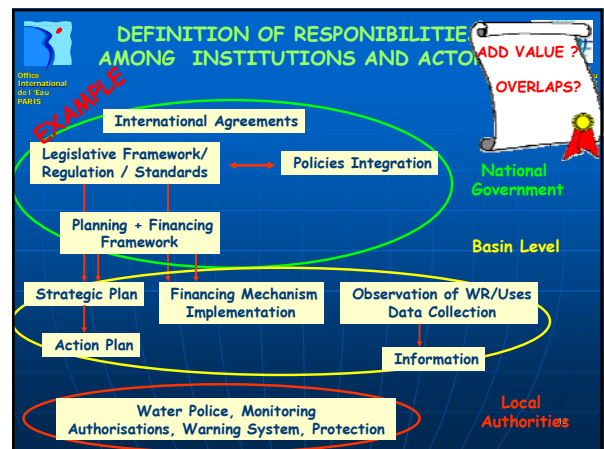
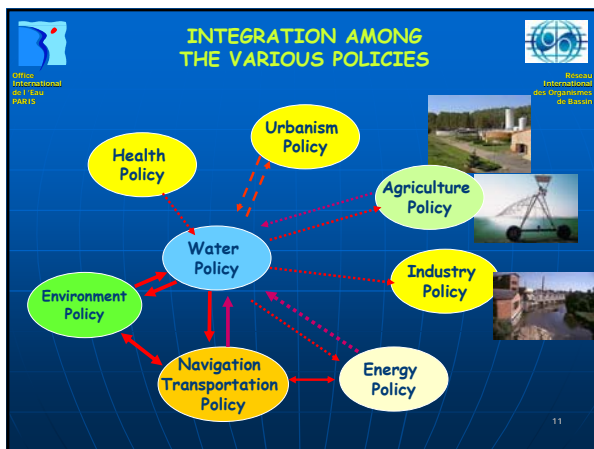
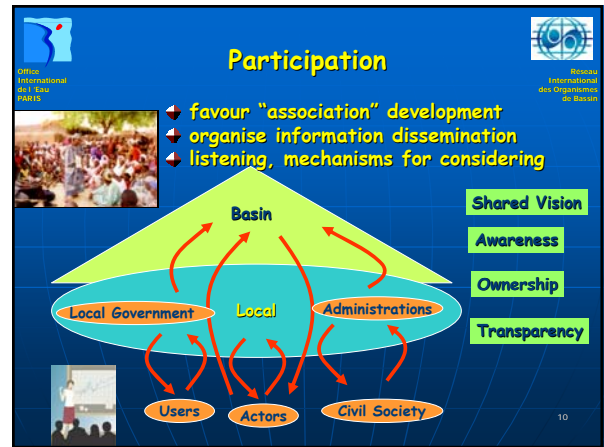
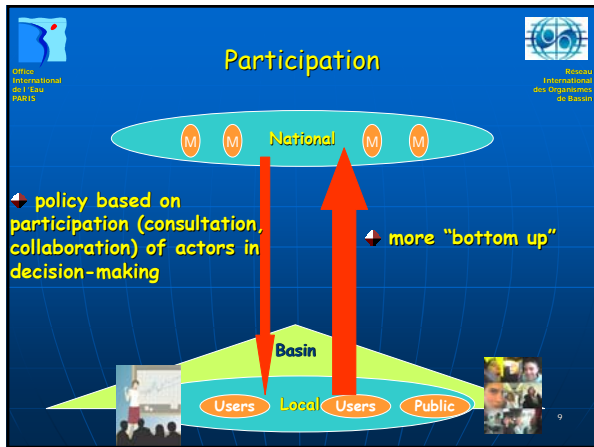
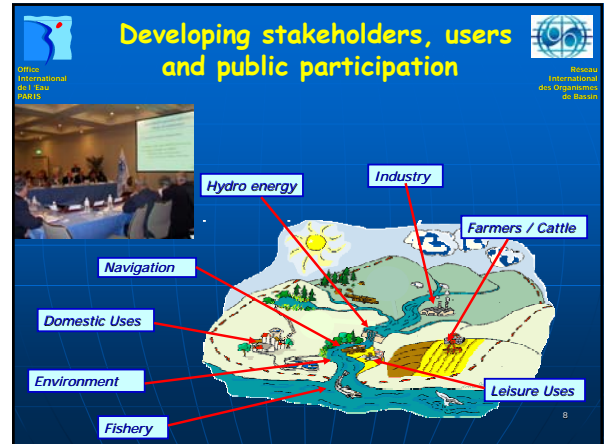
An Integrated Approach

Apply good governance principles and IWRM at appropriated levels

- National Institutional Framework enabling efficient water governance in all water-related fields
- Implementation at Basin levels (hydrographical)
- Collaborative Approach for shared waters (trans-boundary basins or locked sea)

3





Office International de l'Eau PARIS

Network International des Organismes de Bassin

Organising a Global Approach at relevant levels to implement IWRM concretely on the ground



**BASIN ORGANISATION
MANAGEMENT
and
BASIN MANAGEMENT**

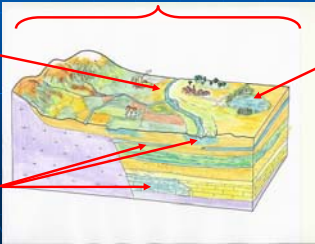
Office International de l'Eau PARIS

Network International des Organismes de Bassin

IWRM at Basin Level

Hydrographical Basins

National } Large Basin } Sub-basin
Transboundary }



Rivers

Lakes

Aquifers

14

Office International de l'Eau PARIS

Network International des Organismes de Bassin

IWRM at Basin Level

... WHY ?



- Rational Territory according to Water Flow
- Solidarity and Water sharing (up/down)
- Place for local participation / Better Ownership
- Making Decision Closer to Stakeholders and Civil Society
- Application of financing mechanisms
- Location for planning adapted to local level

15

Office International de l'Eau PARIS

Network International des Organismes de Bassin

IWRM at Basin Level

... HOW ?

- An institutional "structure" in charge of water management at basin level according to national framework
- No universal Model - various types of BOs
 - Basin Organisation? Basin Comity ?
 - In Trans-boundary context: Commission, Authority ... ?

16

Office International de l'Eau PARIS

Network International des Organismes de Bassin

THE TYPE OF ARRANGEMENT

No Universal Arrangement

Size, scale National Trans-boundary

Stage of Development

Challenges to be addressed

Political, Administrative Economic, Social Situation

Range of Ways

Appropriate Arrangement for BO

17

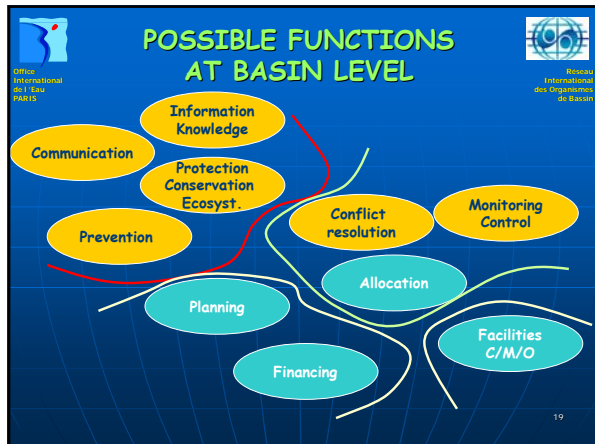
Office International de l'Eau PARIS

Network International des Organismes de Bassin

Various types of BO

- Administrative Commissions
- Arbitration Authority
- Organisation for building/managing infrastructures
- Agency for planning, charges collection, knowledge management, information
- Basin comity or Basin Council
- Associations, syndicats ou consortia

18



- KEY PRINCIPLES FOR ACTION**
- > Principles of precaution and preventive action, principle of priority remedial measures at the source of problems
 - > A combined approach by defining emission limits and environmental quality standards
 - > The polluter-pays principle
 - > The cost recovering principle for all services linked to water use, including environmental costs
 - > Decision making at a level as close as possible to the sites of water use, water degradation
 - > Involvement of the public as a condition for success
- Office International de l'Eau PARIS
- Reseau International des Organismes de Bassin
- 20

- STARTING POINTS**
- > Political Process
 - political commitment (national/trans-boundary)
 - about decentralisation, accountability, bottom-up, participation, integration
 - need effort of communication
- Office International de l'Eau PARIS
- Reseau International des Organismes de Bassin
- 21

- STARTING POINTS**
- > Functions and Responsibilities
 - identification of overlaps, gaps, quality of services, etc...
 - taking into account the socio-political and administrative situation in the country (decentralisation namely)
 - defined after debate and consensus particularly with local authorities and administrations
- Office International de l'Eau PARIS
- Reseau International des Organismes de Bassin
- 22

- STARTING POINTS**
- > Reliable Knowledge, Information, Data base System on Water Resources:
 - Integrated monitoring system
 - Water quality, quantity, uses, land use...
 - Forecasting
-
- Office International de l'Eau PARIS
- Reseau International des Organismes de Bassin
- 23

- Knowledge and Information**
- ... essential for ...
- defining & implementing water policy (standards, limits of discharges...)
 - measuring progress (or not)
 - information of civil society and awareness of users
 - for decision makers & controllers
- Office International de l'Eau PARIS
- Reseau International des Organismes de Bassin
- 24

Knowledge and Information

- A lot of owners of water data & information: administrations, BO, professionals, operators, research, NGOs, ...
- Heterogeneity among data : no harmonisation
- Incomplete (e.g. groundwater)

Office International de l'Eau PARIS

Bureau International des Organismes de Bassin

25

STARTING POINTS

- **Participation development:**
 - Tools to be developed,
 - Awareness campaign,
 - Mechanisms (basin commission..., working groups)
 - Representativeness issue

Office International de l'Eau PARIS


Bureau International des Organismes de Bassin

26

Possible Role of OSCE

Two different levels for action:

- Action for whole region under OSCE - "Transversal"



- Action by Basin (National, International Waterways, Maritime Areas) - "Basin action"

Office International de l'Eau PARIS

Bureau International des Organismes de Bassin

27

Fields to be addressed

- **POLITICAL WILL** in countries (national or international aspects)
- **AWARENESS** about the "Navigation-Environment-Water"
- **CAPACITY BUILDING** for
 - Stakeholders involved in the waterways
 - Decision makers
- **INFORMATION COMMUNICATION**
- **KNOWLEDGE MANAGEMENT, EXCHANGES**

Office International de l'Eau PARIS

Bureau International des Organismes de Bassin

28

Whole Region

- **Regional Dialogue on "Waterways, Navigation, Water & Environment" with Partners**
 - Example of "Dialogue on Food, Water and Environment"
 - Mean to address all issues
 - Outcomes
 - Awareness
 - Political will development
 - Guideline

Office International de l'Eau PARIS

Bureau International des Organismes de Bassin

29

Basin level

- **Assessment of "status" of basin:**
 - What exists ? Rules, Regulations? Capability to move?
 - Vision by Basin Entity on risks, impacts on water
- **Defining geographically and thematically priorities of support for each basin**
- **Developing appropriate activities about Knowledge Management**
 - Impacts, risks, fragility of environment...
 - Tailor made Workshop (information sharing, knowledge learning, framework building)
 - Water Information System - to use existing experiences

Office International de l'Eau PARIS

Bureau International des Organismes de Bassin

30



Basin level

- **Activities for developing/ improving Basin Structure:**
 - National and trans-boundary case studies (INBO)
 - TWINBASIN style approach : exchanges
- **Political will development process** for adoption of key principles and a general framework for action
- **Analysis of institutional and organisational status for defining action plan at Basin level:** Who is doing what? Functional relationships? What is wrong? Gaps? Overlaps?
- **Capacity development planning**

31



Thanks for your attention



d.valensuela@oieau.fr
www.oieau.fr
www.riob.org

32