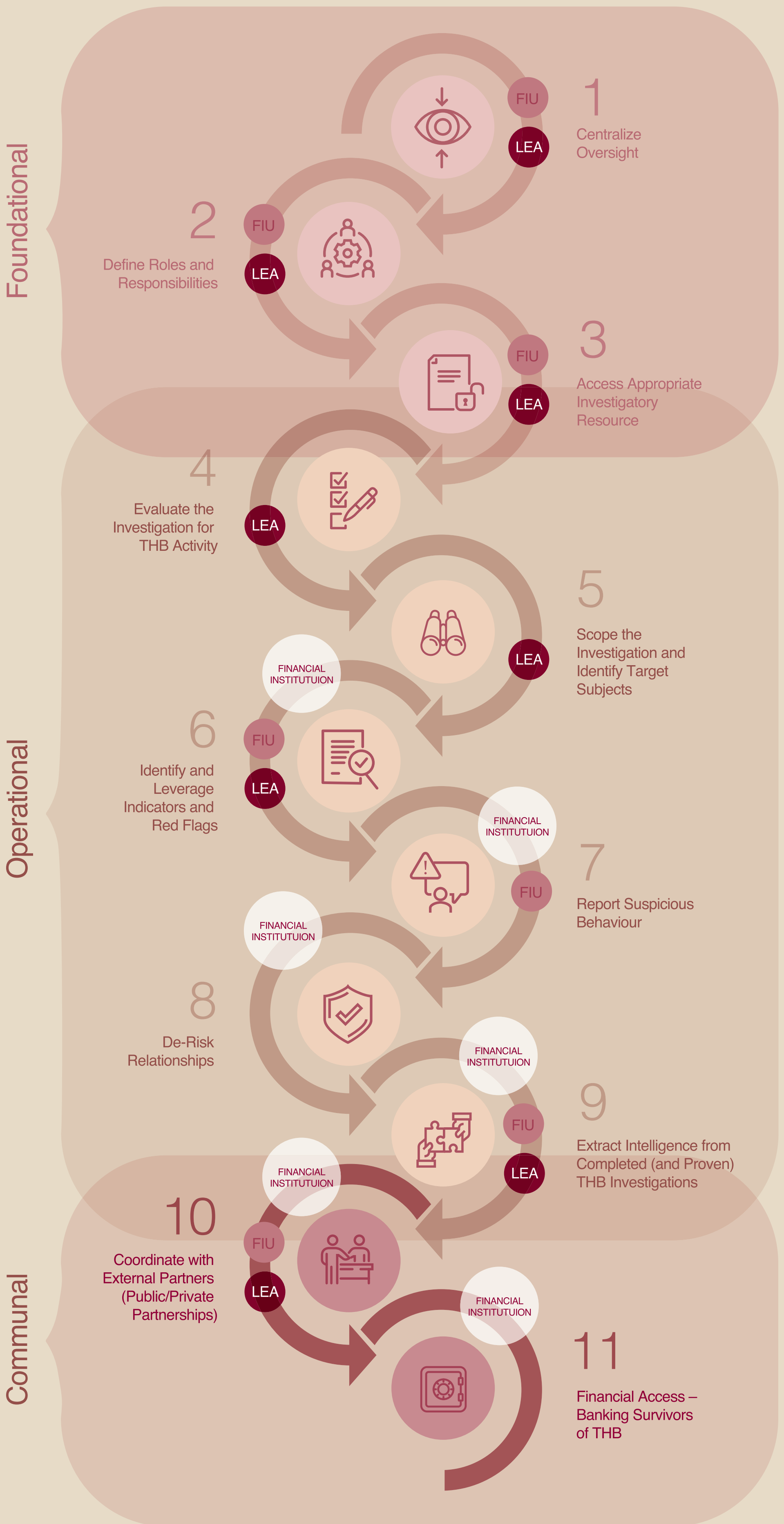


Financial Investigations

Step-by-Step Guide to Financial Investigations Related to Trafficking in Human Beings (THB) & Recommendations

LEA Law Enforcement Agency FIU Financial Intelligence Unit



RECOMMENDATIONS

Contextual Information: establish a foundational definition of THB based on international law, include gender-disaggregated, geography-specific data and work towards the conversion of financial intelligence to quality Suspicious Activity Reports (SARs)

Financial Indicator Development: prioritise indicators specific to THB, rate them according to effectiveness and group them according to: Behavioural; Know Your Customer (KYC); and Transactional

Operational Aspects: compile all indicators into one easy-to-access document, create keywords to be used in SARs and collect resources specifically on the topic of THB