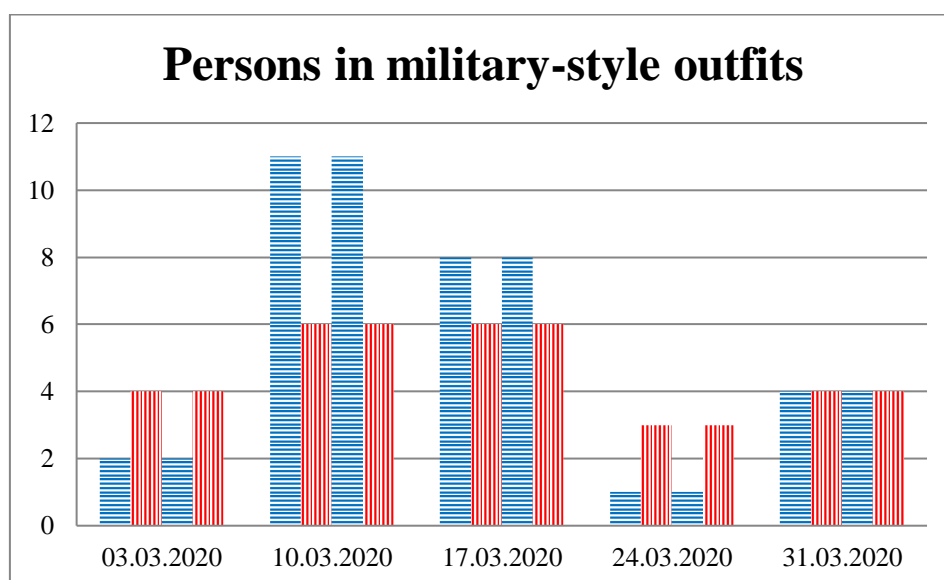
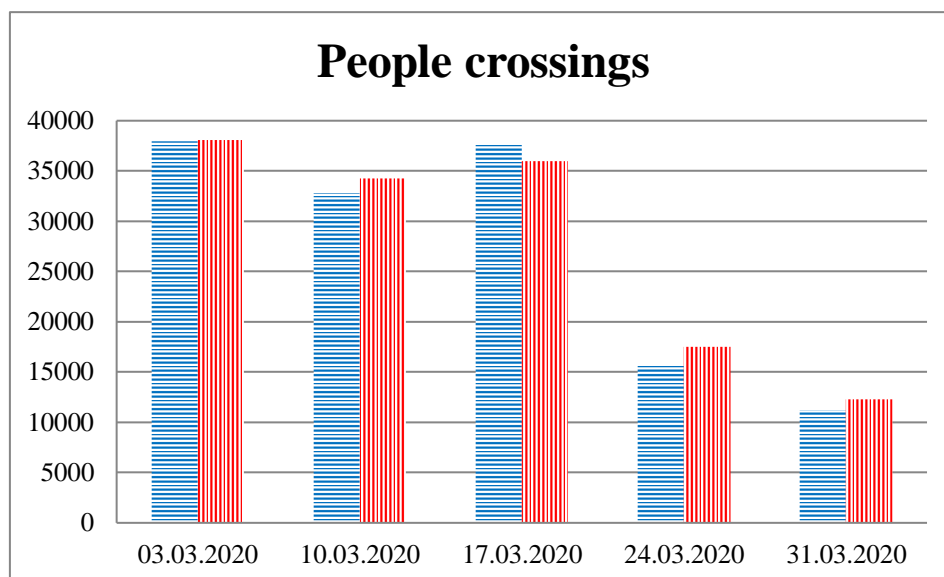


## TRENDS AND FIGURES AT A GLANCE

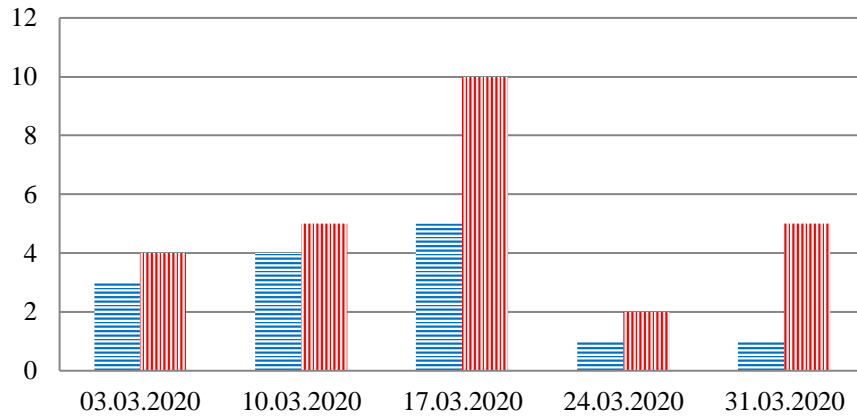
(For the period from 09:00 on 25 February 2020 to 09:00 on 31 March 2020)<sup>1</sup>

■ to the Russian Federation      ■ to Ukraine

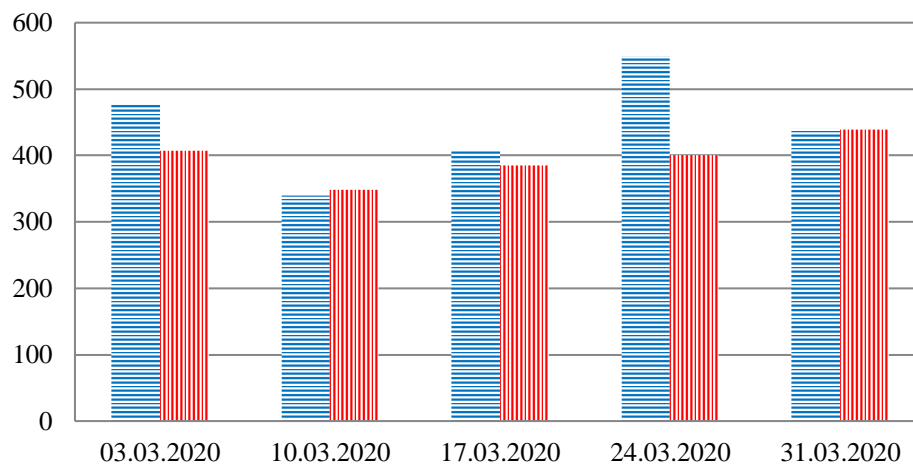


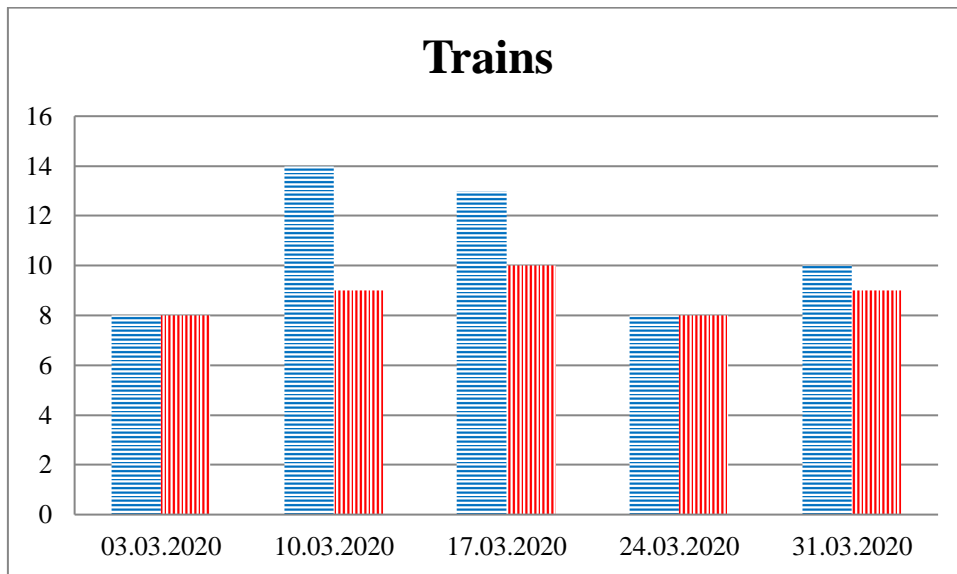
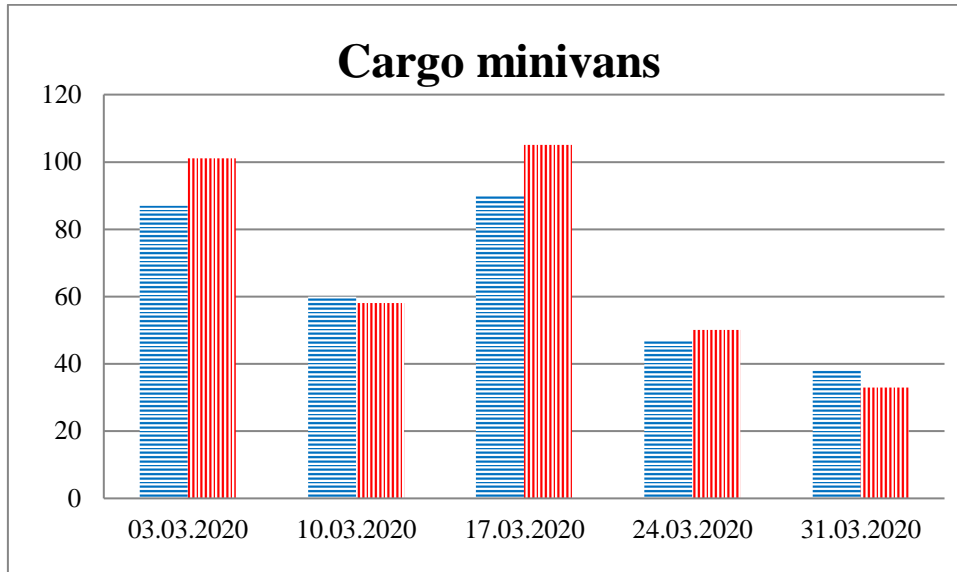
<sup>1</sup>The dates at the bottom of each graph refer to the day when the Weekly Reports were issued and include the observations made during the previous seven days.

### Families with a significant amount of luggage



### Trucks





**Timetable of the trains heard at the Gukovo BCP**

<b>Date</b>	<b>To RF</b>	<b>To UA</b>
24.03.2020	-	-
25.03.2020	-	11:35
26.03.2020	18:10 20:55 22:37	16:02
27.03.2020	-	11:06
28.03.2020	06:03 14:11 18:40	12:01
29.03.2020	12:45 16:40	10:34 14:31 21:41
30.03.2020	12:25 15:49	01:34 10:40
31.03.2020	-	-