



Daily Report 27/2020

3 February 2020¹

Summary

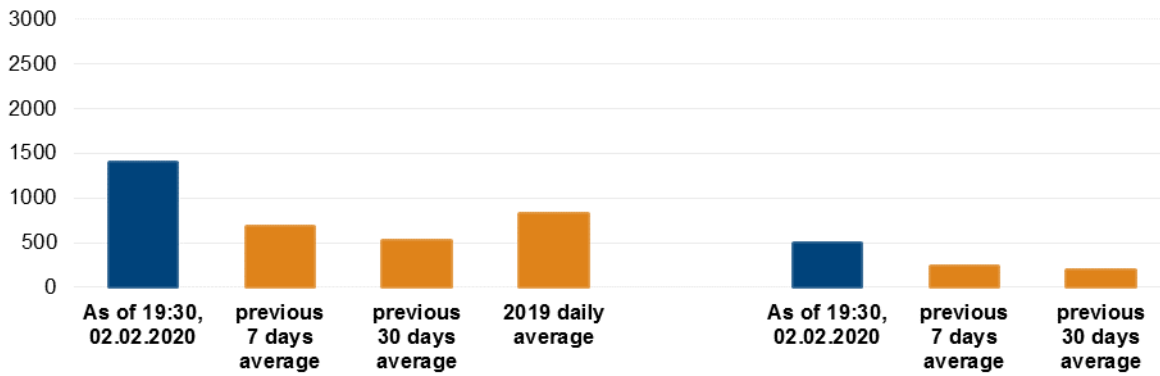
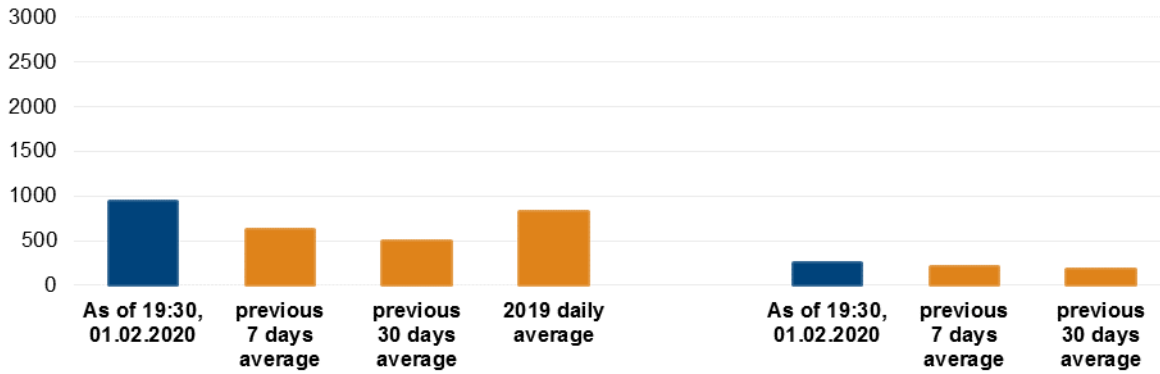
- Compared with the previous reporting period, between the evenings of 31 January and 1 February, the SMM recorded fewer ceasefire violations in both Donetsk and Luhansk regions.
- Between the evenings of 1 and 2 February, the Mission recorded more ceasefire violations in Donetsk region and fewer in Luhansk region, compared with the previous 24 hours.
- The Mission continued monitoring the security situation at the disengagement areas near Stanytsia Luhanska, Zolote and Petrivske.
- The SMM's freedom of movement continued to be restricted, including at checkpoints in non-government-controlled Zaichenko, Bezimenne and Novoazovsk, all in southern Donetsk region.*

¹ Based on information from the Monitoring Teams as of 19:30, 2 February 2020. All times are in Eastern European Time. The SMM cameras near Bohdanivka and near Stanytsia Luhanska bridge were not operational from 31 January-1 February. The SMM camera at Oktiabr mine was not operational from 31 January-2 February.

Ceasefire violations²

Number of recorded ceasefire violations³

Number of recorded explosions⁴



² For a complete breakdown of ceasefire violations, please see the annexed table.

³ Including explosions.

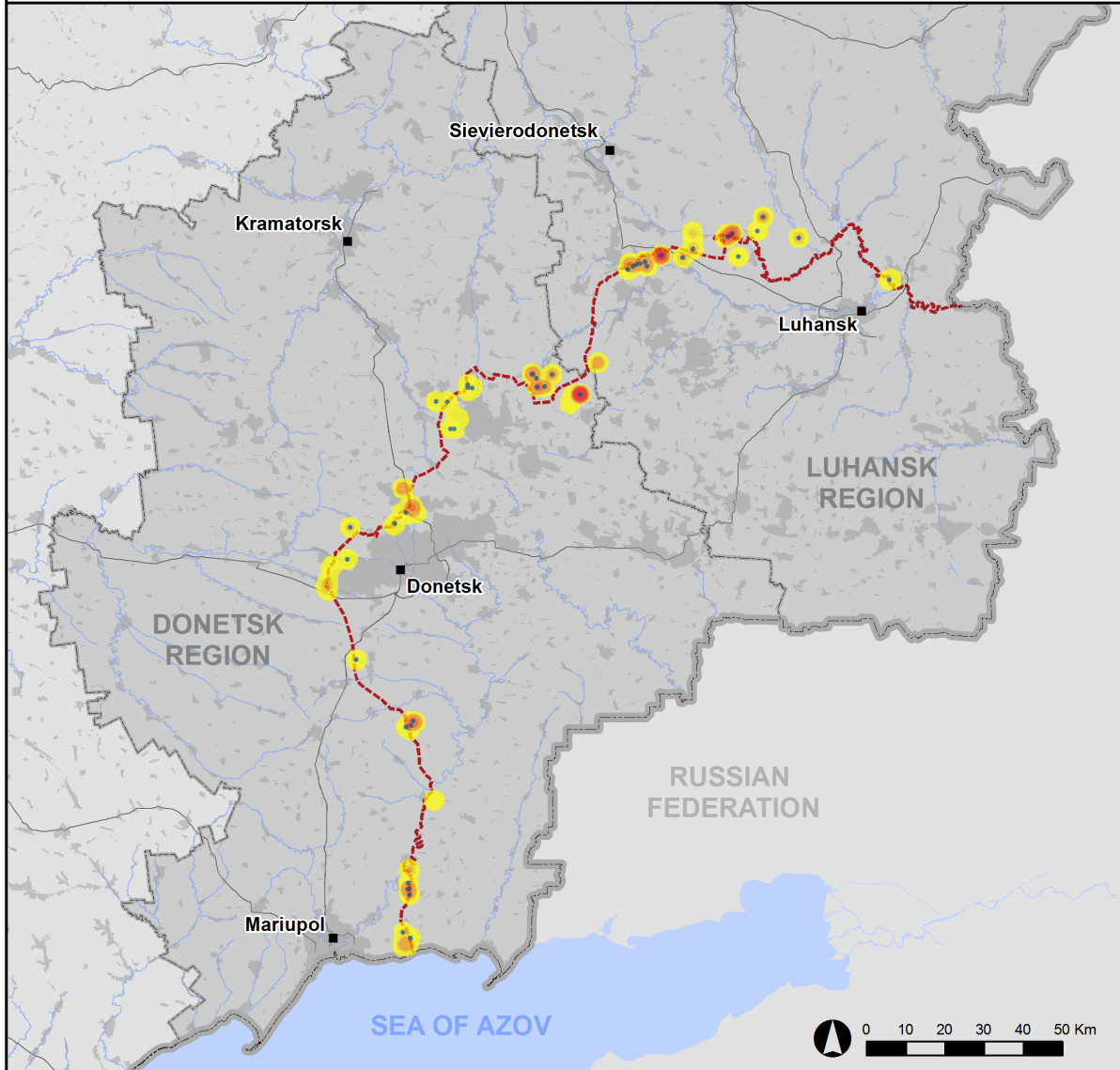
⁴ Including from unidentified weapons.

Map of recorded ceasefire violations

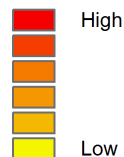


Organization for Security and
Co-operation in Europe
Special Monitoring Mission to Ukraine

Ceasefire violations observed by the SMM 1-2 February 2020



Ceasefire violation concentration



• Explosion

■ Settlement

..... Estimated line of contact

Sources: Administrative Boundaries - OCHA; Roads, Rivers - OpenStreetMap; Sea - VLIZ (2005), IHO Sea Areas; Other - OSCE.

Coordinate System: WGS 1984 UTM Zone 37N

This map is provided for illustrative purposes only. Its content is not warranted to be error-free and does not imply endorsement or acceptance by the OSCE SMM.

© OSCE SMM 2019 Use, copy, reproduction, transmission, broadcasting, sale, license, or exploitation not permitted without OSCE prior written authorization.

Created: 03/02/2020

In Donetsk region, between the evenings of 31 January and 1 February, the SMM recorded fewer ceasefire violations, including fewer explosions (about 80), compared with the [previous reporting period](#) (125 explosions). The majority of ceasefire violations, including the majority of explosions, were recorded in areas south-east of Svitlodarsk (government-controlled, 57km north-east of Donetsk).

Between the evenings of 1 and 2 February, the Mission recorded more ceasefire violations, including more explosions (about 320), compared with the previous 24 hours. More than 80 per cent of ceasefire violations were recorded south-south-east of Svitlodarsk and in areas north-west of Novohryhorivka (non-government-controlled, 61km north-east of Donetsk), including the majority of explosions.

In Luhansk region, between the evenings of 31 January and 1 February, the Mission recorded fewer ceasefire violations, including, however, more explosions (about 180), compared with the [previous reporting period](#) (about 100 explosions). The majority of ceasefire violations were recorded in areas west-north-west of Sentianivka (formerly Frunze, non-government-controlled, 44km west of Luhansk).

Between the evenings of 1 and 2 February, the SMM recorded fewer ceasefire violations, including fewer explosions (170), compared with the previous 24 hours. The majority of ceasefire violations were recorded in areas west and west-south-west of Trokhizbenka (government-controlled, 32km north-west of Luhansk).

Disengagement areas near Stanytsia Luhanska, Zolote and Petrivske⁵

On 1 and 2 February, inside the **disengagement area near Stanytsia Luhanska** (government-controlled, 16km north-east of Luhansk), the SMM saw on two occasions five members of the armed formations (wearing armbands with “JCCC” written on them) between the new span of the Stanytsia Luhanska bridge (15km north-east of Luhansk) and their checkpoint south of it.

On 2 February, while positioned on the eastern edge of Stanytsia Luhanska, the Mission heard two undetermined explosions and five bursts of small-arms fire, all at an assessed range of 3-5km west-south-west, assessed as outside the disengagement area but within 5km of its periphery.

On the evening and night of 31 January-1 February, the SMM camera in Zolote (government-controlled, 60km west of Luhansk) recorded 26 projectiles in flight, an undetermined explosion and two muzzle flashes, all at an assessed range of 3-5km east and east-south-east, assessed as outside the **disengagement area near Zolote** but within 5km of its periphery. On 1 and 2 February, on the southern edge of the disengagement area, the SMM saw on two occasions two members of the armed formations (wearing armbands with “JCCC” written on them).

From 24-30 January, the SMM camera in Petrivske (non-government-controlled, 41km south of Donetsk) recorded four explosions including one assessed as a subsequent impact 200-300m south-south-west, at an assessed range of 1-3km south-south-west and south-west, as well as 76 projectiles in flight, mostly from east to west, at an assessed range of 0.2-1.5km south-south-

⁵ Disengagement is foreseen in the Framework Decision of the Trilateral Contact Group relating to disengagement of forces and hardware of 21 September 2016.

west and south-west, all assessed as inside the **disengagement area near Petrivske**.⁶ On 1 February, while positioned about 1km north of Petrivske, the SMM heard two undetermined explosions 3-4km south-south-west, as well as 53 bursts and shots of heavy-machine-gun and small-arms fire at an assessed range of 1-1.5km south, all assessed as outside the disengagement area near Petrivske but within 5km of its periphery. The SMM also saw four men in military-style attire walking inside the disengagement area near positions of the armed formations about 60m south of its northern edge. It saw smoke about 250m south of the northern edge of the disengagement area.

Indications of military and military-type presence in the security zone⁷

The SMM observed armoured combat vehicles inside the security zone in government-controlled areas of both Luhansk and Donetsk regions (for further details, see the table below).

On 31 January, an SMM mini-unmanned aerial vehicle (UAV) spotted a 100m-long trench running east to west, about 130m north of the nearest residential houses in Tavrycheske (non-government-controlled, 76km south of Donetsk) and a second 50m-long trench about 600m further north-west. Both trenches were assessed as belonging to the armed formations (not seen on imagery from 9 August 2019).

On the same day, a mid-range UAV spotted a 400m-long trench running from north to south (not seen on imagery from 12 September 2019) about 1.5km south-west of Verkhnohyrokiivske (formerly Oktiabr, non-government-controlled, 85km south of Donetsk). About 1km further south, the UAV spotted a 15m-long trench extension of an 80m-long trench running from north to south-east (not seen on imagery from 3 November 2019). All of the aforesaid trenches were assessed as belonging to the armed formations.

Presence of mines near Verkhnohyrokiivske

On 31 January, a mid-range UAV spotted for the first time at least 300 probable anti-tank mines laid in three rows running from north to south for about 700m, about 650m west of Verkhnohyrokiivske (not seen on imagery from 12 September 2019). It [again](#) spotted at least 100 anti-tank mines about 3.5km north of Verkhnohyrokiivske and about 200 anti-tank mines laid in two rows about 1.7km further west. All of the aforesaid mines were assessed as belonging to the armed formations.

SMM facilitation of operation of critical civilian infrastructure

On 1 and 2 February, the Mission continued to facilitate the operation of the Donetsk Filtration Station (15km north of Donetsk). On 2 February, the SMM monitored the security situation around the pumping station near Vasylivka (non-government-controlled, 20km north of Donetsk).

⁶ Data from the SMM camera in Petrivske is downloaded manually. Between 20-27 January 2020, the SMM was unable to access its camera site due to denials of its freedom of movement at a checkpoint of the armed formations north of Petrivske.

⁷ The hardware mentioned in this section is not proscribed by the provisions of the Minsk agreements on the withdrawal of weapons.

Border areas outside government control

On 1 February, while at a border crossing point near Dovzhanske (84km south-east of Luhansk) for about 40 minutes, the SMM saw two covered cargo trucks (one with “LPR” and one with “DPR” plates) and a bus with “LPR” plates exiting Ukraine.

On the same day, while at a border crossing point near Uspenka (73km south-east of Donetsk) for about 20 minutes, the SMM saw 18 cars (two with Ukrainian and 12 with Russian Federation licence plates, as well as four with “DPR” plates), eight covered cargo trucks (four with Ukrainian and two with Russian Federation licence plates, as well as two with “DPR” plates), two buses with “DPR” plates and 15 pedestrians (four women, 11 men, mixed ages) entering Ukraine. It also saw 34 cars (including 17 with “DPR” plates), four covered cargo trucks (three with Ukrainian and one with Russian Federation licence plates), two buses (one with Russian Federation licence plates and one with “DPR” plates) and 18 pedestrians (ten women and eight men, mixed ages) exiting Ukraine.

On the same day, while at a border crossing point near Novoazovsk (102km south-east of Donetsk) for about 30 minutes, the SMM saw eight cars (one with Ukrainian and two with Russian Federation licence plates, as well as five with “DPR” plates) and two covered cargo trucks with Ukrainian licence plates entering Ukraine. It also saw six cars (one with Ukrainian, two with Russian Federation licence plates, as well as three with “DPR” plates) and two covered cargo trucks with “DPR” plates exiting Ukraine.

SMM monitored security situation south-east of Kherson region

On 2 February, the SMM observed calm situations at the checkpoint between Chonhar (163km south-east of Kherson) and Crimea, and along the Sea of Azov coast.

The Mission continued monitoring in Odessa, Lviv, Ivano-Frankivsk, Kharkiv, Dnipro, Chernivtsi and Kyiv.

***Restrictions of the SMM’s freedom of movement or other impediments to fulfilment of its mandate**

The SMM’s monitoring and freedom of movement are restricted by security hazards and threats, including risks posed by mines, unexploded ordnance (UXO) and other impediments – which vary from day to day. The SMM’s mandate provides for safe and secure access throughout Ukraine. All signatories of the Package of Measures have agreed on the need for this safe and secure access, that restriction of the SMM’s freedom of movement constitutes a violation, and on the need for rapid response to these violations. They have also agreed that the Joint Centre for Control and Co-ordination (JCCC) should contribute to such response and co-ordinate mine clearance. Nonetheless, the armed formations in parts of Donetsk and Luhansk regions frequently deny the SMM access to areas adjacent to Ukraine’s border outside control of the Government (for example, see [SMM Daily Report 1 February 2020](#)). The SMM’s operations in Donetsk and Luhansk regions remain restricted following [the fatal incident of 23 April 2017 near Pryshyb](#); these restrictions continued to limit the Mission’s observations.

Denial of access:

- On 1 February, at a permanent storage site in a non-government-controlled area of Donetsk region, the SMM was denied access by four armed members of the armed formations.

- On 1 February, at a checkpoint north of Zaichenko (non-government-controlled, 93km south of Donetsk), two armed members of the armed formations [again](#) denied the SMM passage towards Pikuzy (formerly Kominternove, non-government-controlled, 92km south of Donetsk) and Sakhanka (non-government-controlled, 97km south of Donetsk), citing “ongoing demining activities”. While present, the SMM saw civilian traffic proceeding west through the checkpoint.
- On 1 February, at a checkpoint west of Bezimenne (non-government-controlled, 100m south of Donetsk), two armed members of the armed formations [again](#) denied the SMM passage, citing “orders from the superiors”.
- On 1 February, at a checkpoint north-east of Novoazovsk (non-government-controlled, 102km south-east of Donetsk), two armed members of the armed formations [again](#) denied the SMM passage towards Siedove (non-government-controlled, 106km south of Donetsk), citing an “ongoing operation in the area”.
- On 2 February, at a checkpoint north of Novoazovsk, three members of the armed formations (two visibly armed) [again](#) denied the SMM passage towards Novoazovsk. While present, the SMM saw civilian traffic proceeding through the checkpoint in both directions.
- On 2 February, at a checkpoint north of Zaichenko, a member of the armed formations [again](#) denied the SMM passage towards Pikuzy, citing “ongoing engineering activities”.

Regular restrictions related to disengagement areas and mines/UXO:

- The sides continued to deny the SMM full access, as well as the ability to travel certain roads previously identified as important for effective monitoring by the Mission and for civilians’ movement, through failure to conduct comprehensive clearance of mines, UXO and other obstacles.

Other impediments:

- On 31 January, an SMM long-range UAV flying over Stepanivka (government-controlled, 54km north of Donetsk) experienced GPS signal interference, assessed as caused by probable jamming and by jamming.⁸
- On 2 February, medical staff at a hospital in Holubivka (formerly Kirovsk, non-government-controlled, 51km west of Luhansk) refused to provide the SMM information about a civilian casualty.

⁸ The interference could have originated from anywhere within the radius of kilometres from the UAVs’ position.

Table of indications of military and military-type presence in the security zone⁹

| Date | No. | Type | Location | Source of observation |
|------------------------------------|------------|-------------------------------------|--|------------------------------|
| Government-controlled areas | | | | |
| 01/02/2020 | 1 | Armoured personnel carrier (BTR-80) | Near Muratove (51km north-west of Luhansk) | Patrol |
| | 3 | Infantry fighting vehicle (BMP-2) | In Bohdanivka (41km south-west of Donetsk) | |
| 02/02/2020 | 1 | Armoured personnel carrier (BTR-60) | In Novobakhmutivka (28km north of Donetsk) | Patrol |
| | 1 | Anti-aircraft gun (ZU-23, 23mm) | In Orikhove (57km north-west of Luhansk) | Patrol |

⁹ The hardware mentioned in this section is not proscribed by the provisions of the Minsk agreements on the withdrawal of weapons.

Table of ceasefire violations as of 2 February 2020¹⁰

| SMM position | Event location | Means | No. | Observation | Description | Weapon | Date, time |
|--|---|-----------|----------|-------------|---|----------|---------------|
| SMM camera in Berezove (government-controlled, 31km SW of Donetsk) | 2-4km ESE | Recorded | 1 | Explosion | Undetermined | N/K | 1-Feb, 17:42 |
| SMM camera 1.5km NE of Hnutove (government-controlled, 90km S of Donetsk) | 3-5km E | Recorded | 6 | Projectile | NNW to SSE | N/K | 31-Jan, 22:42 |
| | 3-5km E | Recorded | 1 | Explosion | Undetermined (also recorded by Hnutove EECF camera) | N/K | 31-Jan, 22:42 |
| | 3-5km E | Recorded | 1 | Projectile | SSW to NNE | N/K | 31-Jan, 22:42 |
| | 3-5km E | Recorded | 1 | Projectile | NNE to SSW | N/K | 31-Jan, 22:44 |
| | 3-5km E | Recorded | 1 | Explosion | Undetermined | N/K | 31-Jan, 22:51 |
| | 3-5km E | Recorded | 6 | Projectile | N to S | N/K | 31-Jan, 22:54 |
| | 3-5km E | Recorded | 2 | Explosion | Undetermined (also recorded by Hnutove EECF camera) | N/K | 31-Jan, 22:54 |
| | 1-3km ESE | Recorded | 3 | Projectile | In vertical flight | N/K | 31-Jan, 22:55 |
| | 1-3km ESE | Recorded | 5 | Explosion | Undetermined | N/K | 31-Jan, 22:56 |
| | 1-3km ESE | Recorded | 3 | Explosion | Airburst | N/K | 31-Jan, 22:57 |
| | 1-3km ESE | Recorded | 4 | Projectile | NW to SE | N/K | 31-Jan, 22:57 |
| | 1-3km ESE | Recorded | 1 | Explosion | Undetermined | N/K | 31-Jan, 23:00 |
| | SMM camera at entry-exit checkpoint in Hnutove (government-controlled, 90km S of Donetsk) | 1-3km ENE | Recorded | 5 | Projectile | NW to SE | N/K |
| SMM camera in Krasnohorivka (government-controlled, 21km W of Donetsk) | 1-3km ESE | Recorded | 1 | Projectile | NNE to SSW | N/K | 31-Jan, 21:03 |
| | 1-3km SE | Recorded | 1 | Projectile | NNE to SSW | N/K | 31-Jan, 22:05 |
| | 1-3km SE | Recorded | 1 | Projectile | WNW to ESE | N/K | 31-Jan, 22:05 |
| SMM camera at entry-exit checkpoint in Maiorsk (government-controlled, 45km NE of Donetsk) | 2-4km E | Recorded | 1 | Explosion | Undetermined | N/K | 31-Jan, 22:05 |
| | 2-4km E | Recorded | 1 | Projectile | NNW to SSE | N/K | 31-Jan, 23:38 |
| SMM camera at entry-exit checkpoint in Marinka (government-controlled, 23km SW of Donetsk) | 1-2km NNE | Recorded | 1 | Projectile | SE to NW (also recorded by Krasnohorivka camera) | N/K | 31-Jan, 22:06 |
| | 1-2km NNE | Recorded | 1 | Projectile | SE to NW (also recorded by Krasnohorivka camera) | N/K | 31-Jan, 23:11 |
| | 1-2km NNE | Recorded | 1 | Projectile | E to W (also recorded by Krasnohorivka camera) | N/K | 31-Jan, 23:17 |
| | 1-2km NNE | Recorded | 1 | Projectile | E to W (also recorded by Krasnohorivka camera) | N/K | 31-Jan, 23:40 |
| | 2-4km NNE | Recorded | 5 | Projectile | SSW to NNE | N/K | 31-Jan, 23:58 |
| | 2-4km NNE | Recorded | 1 | Projectile | E to W | N/K | 1-Feb, 00:43 |

¹⁰ The table only includes ceasefire violations directly observed by the SMM patrols or recorded by the SMM cameras and it may include those also assessed to be live-fire exercises, controlled detonations, etc. Details provided – in terms of distance, direction, weapons-type, etc. – are based on assessments provided by monitors on the ground and technical monitoring officers, and are not always necessarily precise. When information is not known (indicated with an “N/K”), the SMM was unable to ascertain such information due to distance, weather conditions technical limitations and/or other considerations. Ceasefire violations recorded by more than one patrol/camera and assessed to be the same are entered only once.

| | | | | | | | |
|--|-------------|----------|---|------------|--|-----|---------------|
| | 1-2km NNE | Recorded | 5 | Projectile | SSW to NNE | N/K | 1-Feb, 00:46 |
| | 2-4km NNE | Recorded | 1 | Projectile | ESE to WNW (also recorded by Krasnohorivka camera) | N/K | 1-Feb, 01:11 |
| | 1-2km NNE | Recorded | 1 | Projectile | E to W (also recorded by Krasnohorivka camera) | N/K | 1-Feb, 03:25 |
| SMM camera in Petrivske (non-government-controlled, 41km S of Donetsk) | 0.2-1km SW | Recorded | 1 | Projectile | E to W (assessed as inside the disengagement area) | N/K | 24-Jan, 02:44 |
| | 0.5-1km SSW | Recorded | 1 | Projectile | NE to SW (assessed as inside the disengagement area) | N/K | 24-Jan, 02:44 |
| | 0.5-1km SSW | Recorded | 2 | Projectile | NE to SW (assessed as inside the disengagement area) | N/K | 24-Jan, 03:53 |
| | 0.5-1km SW | Recorded | 2 | Projectile | E to W (assessed as inside the disengagement area) | N/K | 24-Jan, 17:57 |
| | 0.5-1km SW | Recorded | 1 | Projectile | E to W (assessed as inside the disengagement area) | N/K | 24-Jan, 19:05 |
| | 0.5-1km SW | Recorded | 7 | Projectile | SE to NW (assessed as inside the disengagement area) | N/K | 24-Jan, 21:23 |
| | 0.5-1km SSW | Recorded | 1 | Projectile | E to W (assessed as inside the disengagement area) | N/K | 25-Jan, 00:01 |
| | 0.5-1km SSW | Recorded | 1 | Projectile | E to W (assessed as inside the disengagement area) | N/K | 25-Jan, 00:59 |
| | 0.5-1km SSW | Recorded | 1 | Projectile | E to W (assessed as inside the disengagement area) | N/K | 25-Jan, 01:59 |
| | 0.5-1km SW | Recorded | 1 | Projectile | ESE to WNW (assessed as inside the disengagement area) | N/K | 25-Jan, 17:59 |
| | 0.5-1km SSW | Recorded | 1 | Projectile | SE to NW (assessed as inside the disengagement area) (possibly also recorded by Bohdanivka camera) | N/K | 25-Jan, 18:57 |
| | 0.5-1km SW | Recorded | 1 | Projectile | SE to NW (assessed as inside the disengagement area) | N/K | 25-Jan, 18:57 |

| | | | | | | | |
|---------------|----------|---|------------|--|--|-----|---------------|
| | | | | | area) (possibly also recorded by Bohdanivka camera) | | |
| 0.5-1km SW | Recorded | 2 | Projectile | | SE to NW (assessed as inside the disengagement area) | N/K | 25-Jan, 19:55 |
| 0.5-1km SSW | Recorded | 2 | Projectile | | SW to NE (assessed as inside the disengagement area) | N/K | 25-Jan, 20:41 |
| 0.5-1km SSW | Recorded | 2 | Projectile | | ESE to WNW (assessed as inside the disengagement area) | N/K | 26-Jan, 01:02 |
| 0.5-1km SSW | Recorded | 3 | Projectile | | SE to NW (assessed as inside the disengagement area) | N/K | 26-Jan, 01:37 |
| 0.5-1km SSW | Recorded | 2 | Projectile | | ESE to WNW (assessed as inside the disengagement area) | N/K | 26-Jan, 02:02 |
| 0.5-1.5km SW | Recorded | 1 | Projectile | | E to W (assessed as inside the disengagement area) (possibly also recorded by Bohdanivka camera) | N/K | 26-Jan, 18:15 |
| 0.5-1.5km SSW | Recorded | 1 | Projectile | | ENE to WSW (assessed as inside the disengagement area) (possibly also recorded by Bohdanivka camera) | N/K | 26-Jan, 18:15 |
| 0.5-1.5km SW | Recorded | 1 | Projectile | | E to W (assessed as inside the disengagement area) (possibly also recorded by Bohdanivka camera) | N/K | 26-Jan, 19:04 |
| 0.5-1.5km SSW | Recorded | 1 | Projectile | | ENE to WSW (assessed as inside the disengagement area) (possibly also recorded by Bohdanivka camera) | N/K | 26-Jan, 19:04 |
| 0.5-1.5km SW | Recorded | 1 | Projectile | | E to W (assessed as inside the disengagement area) | N/K | 26-Jan, 19:58 |
| 0.5-1.5km SSW | Recorded | 1 | Projectile | | ENE to WSW (assessed as inside the | N/K | 26-Jan, 19:58 |

| | | | | | | | |
|---------------|----------|---|------------|--|--|-----|---------------|
| | | | | | disengagement area) | | |
| 2-3km SW | Recorded | 2 | Explosion | | Undetermined, assessed as inside the disengagement area | N/K | 26-Jan, 20:29 |
| 0.5-1.5km SW | Recorded | 1 | Projectile | | E to W (assessed as inside the disengagement area) | N/K | 26-Jan, 20:35 |
| 0.5-1.5km SSW | Recorded | 1 | Projectile | | SE to NW (assessed as inside the disengagement area) (possibly also recorded by Bohdanivka camera) | N/K | 26-Jan, 20:36 |
| 0.5-1.5km SSW | Recorded | 1 | Projectile | | NW to SE (assessed as inside the disengagement area) (possibly also recorded by Bohdanivka camera) | N/K | 26-Jan, 20:36 |
| 0.5-1.5km SSW | Recorded | 1 | Projectile | | WSW to ENE (assessed as inside the disengagement area) | N/K | 26-Jan, 21:15 |
| 0.5-1.5km SSW | Recorded | 3 | Projectile | | NW to SE (assessed as inside the disengagement area) | N/K | 26-Jan, 21:20 |
| 200-600m SW | Recorded | 1 | Projectile | | E to W (assessed as inside the disengagement area) | N/K | 27-Jan, 00:12 |
| 200-600m SW | Recorded | 2 | Projectile | | E to W (assessed as inside the disengagement area) | N/K | 27-Jan, 01:02 |
| 0.5-1km SSW | Recorded | 1 | Projectile | | E to W (assessed as inside the disengagement area) | N/K | 27-Jan, 02:02 |
| 200-600m SW | Recorded | 1 | Projectile | | E to W (assessed as inside the disengagement area) | N/K | 27-Jan, 02:35 |
| 0.5-1km SSW | Recorded | 1 | Projectile | | E to W (assessed as inside the disengagement area) | N/K | 27-Jan, 02:36 |
| 0.5-1km SSW | Recorded | 2 | Projectile | | E to W (assessed as inside the disengagement area) | N/K | 27-Jan, 19:04 |
| 0.5-1km SSW | Recorded | 2 | Projectile | | E to W (assessed as inside the disengagement area) | N/K | 27-Jan, 19:59 |

| | | | | | | |
|--------------|----------|---|--------------|--|-----|---------------|
| 0.5-1km SSW | Recorded | 1 | Projectile | E to W (assessed as inside the disengagement area) | N/K | 27-Jan, 20:49 |
| 1-2km SSW | Recorded | 1 | Explosion | Undetermined (assessed as inside the disengagement area) | N/K | 27-Jan, 21:51 |
| 0.5-1km SSW | Recorded | 3 | Projectile | E to W (assessed as inside the disengagement area) | N/K | 27-Jan, 22:00 |
| 0.5-1km SSW | Recorded | 1 | Muzzle flash | Assessed as inside the disengagement area | N/K | 27-Jan, 22:05 |
| 0.5-1km SSW | Recorded | 1 | Projectile | WSW to ENE (subsequent to previous event, assessed as inside the disengagement area) | N/K | 27-Jan, 22:05 |
| 200-300m SSW | Recorded | 1 | Explosion | Impact (subsequent to previous event, assessed as inside the disengagement area) | N/K | 27-Jan, 22:05 |
| 0.5-1km SSW | Recorded | 2 | Projectile | E to W (assessed as inside the disengagement area) | N/K | 28-Jan, 00:13 |
| 0.5-1km SSW | Recorded | 1 | Projectile | NE to SW (assessed as inside the disengagement area) | N/K | 29-Jan, 18:05 |
| 0.5-1km SSW | Recorded | 1 | Projectile | NE to SW (assessed as inside the disengagement area) | N/K | 29-Jan, 19:08 |
| 0.5-1km SSW | Recorded | 1 | Projectile | E to W (assessed as inside the disengagement area) | N/K | 29-Jan, 21:56 |
| 200-500m SW | Recorded | 1 | Projectile | SE to NW (assessed as inside the disengagement area) | N/K | 29-Jan, 21:57 |
| 200-500m SW | Recorded | 1 | Projectile | E to W (assessed as inside the disengagement area) | N/K | 29-Jan, 23:44 |
| 200-500m SW | Recorded | 1 | Projectile | ENE to WSW (assessed as inside the disengagement area) | N/K | 29-Jan, 23:44 |
| 0.5-1km SW | Recorded | 2 | Projectile | E to W (assessed as inside the | N/K | 30-Jan, 01:30 |

| | | | | | | | |
|---|---|----------|----------|------------|--|------------|--------------------|
| | | | | | disengagement area) | | |
| | 0.5-1km SW | Recorded | 1 | Projectile | E to W (assessed as inside the disengagement area) | N/K | 30-Jan, 01:33 |
| | 0.5-1km SSW | Recorded | 2 | Projectile | E to W (assessed as inside the disengagement area) | N/K | 30-Jan, 02:38 |
| SMM camera 1km SW of Shyrokyne (government-controlled, 100km S of Donetsk) | 2-3km N | Recorded | 1 | Projectile | SW to NE | N/K | 31-Jan, 18:26 |
| | 2-3km N | Recorded | 1 | Projectile | SW to NE | N/K | 31-Jan, 18:41 |
| | 2-3km N | Recorded | 1 | Projectile | SW to NE | N/K | 31-Jan, 18:49 |
| | 2-3km N | Recorded | 1 | Projectile | SW to NE | N/K | 31-Jan, 18:50 |
| | 2-3km N | Recorded | 1 | Projectile | SW to NE | N/K | 31-Jan, 18:51 |
| | 2-3km N | Recorded | 1 | Projectile | SW to NE | N/K | 31-Jan, 19:29 |
| | 4-6km NNE | Recorded | 1 | Explosion | Undetermined | N/K | 31-Jan, 19:40 |
| | 3-5km NNE | Recorded | 1 | Projectile | SE to NW | N/K | 31-Jan, 19:47 |
| | 2-4km N | Recorded | 1 | Projectile | SE to NW | N/K | 31-Jan, 21:48 |
| | 2-4km N | Recorded | 8 | Projectile | E to W | N/K | 1-Feb, 02:44 |
| | 2-4km N | Recorded | 8 | Projectile | E to W | N/K | 1-Feb, 02:45 |
| | 3-4km NNE | Recorded | 1 | Projectile | E to W | N/K | 1-Feb, 17:15 |
| | 3-4km NNE | Recorded | 13 | Projectile | E to W | N/K | 1-Feb, 17:53 |
| | SMM camera in Svitlodarsk (government-controlled, 57km NE of Donetsk) | 4-6km E | Recorded | 6 | Projectile | S to N | N/K |
| 4-6km E | | Recorded | 2 | Projectile | S to N | N/K | 31-Jan, 20:29 |
| 4-6km E | | Recorded | 3 | Projectile | S to N | N/K | 31-Jan, 20:31 |
| 4-6km E | | Recorded | 3 | Projectile | S to N | N/K | 31-Jan, 20:33 |
| 4-6km E | | Recorded | 1 | Projectile | N to S | N/K | 31-Jan, 20:39 |
| 4-6km E | | Recorded | 2 | Projectile | N to S | N/K | 31-Jan, 20:41 |
| 4-6km E | | Recorded | 2 | Projectile | N to S | N/K | 31-Jan, 20:42 |
| 4-6km E | | Recorded | 2 | Projectile | N to S | N/K | 31-Jan, 20:43 |
| 1.1km NW of railway station in Yasynuvata (non-government-controlled, 16km NE of Donetsk) | 2-3km SW | Heard | 1 | Burst | | HMG | 1-Feb, 09:18-09:24 |
| | 2-3km SW | Heard | 7 | Shot | | HMG | 1-Feb, 09:18-09:24 |
| | 3-5km SW | Heard | 1 | Explosion | Undetermined | N/K | 1-Feb, 09:24 |
| Railway station in Yasynuvata (non-government-controlled, 16km NE of Donetsk) | 2-3km W | Heard | 3 | Burst | | HMG | 1-Feb, 10:18 |
| | 2-3km W | Heard | 32 | Shot | | HMG | 1-Feb, 10:56-11:09 |
| SE edge of Kashtanove (non-government-controlled, 13km N of Donetsk) | 1-2km W | Heard | 22 | Burst | | HMG | 1-Feb, 12:34-12:56 |
| | 1-2km W | Heard | 6 | Shot | | Small arms | 1-Feb, 12:34-12:56 |
| | 1-2km W | Heard | 4 | Explosion | Undetermined | N/K | 1-Feb, 12:34-12:56 |
| | 1-2km SSW | Heard | 5 | Burst | | Small arms | 1-Feb, 12:34-12:56 |
| | 1-2km SSW | Heard | 2 | Shot | | Small arms | 1-Feb, 12:34-12:56 |
| About 1km N of Petrivske (non-government-controlled, 41km S of Donetsk) | 1-1.5km S | Heard | 14 | Shot | Assessed as outside the disengagement area | Small arms | 1-Feb, 10:56 |
| | 1-1.5km S | Heard | 4 | Burst | Assessed as outside the disengagement area | HMG | 1-Feb, 11:12 |
| | 1-1.5km S | Heard | 1 | Burst | Assessed as outside the disengagement area | HMG | 1-Feb, 11:15 |

| | | | | | | | |
|--|-----------|----------|----|--------------|---|------------|---------------------|
| | 3-4km SSW | Heard | 2 | Explosion | Undetermined (assessed as outside the disengagement area) | N/K | 1-Feb, 12:31 |
| | 1-1.5km S | Heard | 23 | Shot | Assessed as outside the disengagement area | Small arms | 1-Feb, 12:45-12:47 |
| | 1-1.5km S | Heard | 7 | Burst | Assessed as outside the disengagement area | HMG | 1-Feb, 12:45-12:48 |
| | 1-1.5km S | Heard | 4 | Burst | Assessed as outside the disengagement area | HMG | 1-Feb, 12:49 |
| Netailove (government-controlled, 22km NW of Donetsk) | 5-6km SE | Heard | 12 | Explosion | Undetermined | N/K | 1-Feb, 09:20-09:25 |
| Trudivski area (non-government-controlled, 15km SW of Donetsk city center) | 2-3km SW | Heard | 3 | Shot | | Small arms | 1-Feb, 11:00 |
| Staromykhailivka (non-government-controlled, 15km W of Donetsk) | 1km W | Heard | 1 | Explosion | | N/K | 1-Feb, 11:53 |
| Svitlodarsk (government-controlled, 57km NE of Donetsk) | N/K N/K | Heard | 24 | Explosion | Undetermined | N/K | 31-Jan, 22:01-22:15 |
| | N/K N/K | Heard | 3 | Explosion | Undetermined | N/K | 31-Jan, 22:37 |
| | N/K N/K | Heard | 7 | Burst | | HMG | 31-Jan, 22:47 |
| | N/K N/K | Heard | 2 | Burst | | HMG | 31-Jan, 23:14 |
| | N/K N/K | Heard | 6 | Explosion | Undetermined | N/K | 31-Jan, 23:39-23:45 |
| | N/K N/K | Heard | 18 | Burst | | HMG | 31-Jan, 23:39 |
| | 1-2km SE | Heard | 1 | Explosion | Undetermined | N/K | 1-Feb, 10:52 |
| | 4-5km SE | Heard | 20 | Burst | | HMG | 1-Feb, 11:00-11:49 |
| | 4-5km SE | Heard | 10 | Explosion | Undetermined | N/K | 1-Feb, 11:00-11:49 |
| SMM camera in Zolote (government-controlled, 60km W of Luhansk) | 3-5km E | Recorded | 13 | Projectile | N to S (assessed as outside the disengagement area) | N/K | 31-Jan, 20:07 |
| | 3-5km E | Recorded | 6 | Projectile | S to N (assessed as outside the disengagement area) | N/K | 31-Jan, 20:07 |
| | 3-5km E | Recorded | 1 | Projectile | N to S (assessed as outside the disengagement area) | N/K | 31-Jan, 20:08 |
| | 3-5km E | Recorded | 1 | Projectile | N to S (assessed as outside the disengagement area) | N/K | 31-Jan, 20:10 |
| | 3-5km E | Recorded | 1 | Projectile | N to S (assessed as outside the disengagement area) | N/K | 31-Jan, 20:11 |
| | 3-5km E | Recorded | 1 | Muzzle flash | Assessed as outside the disengagement area | N/K | 31-Jan, 23:55 |

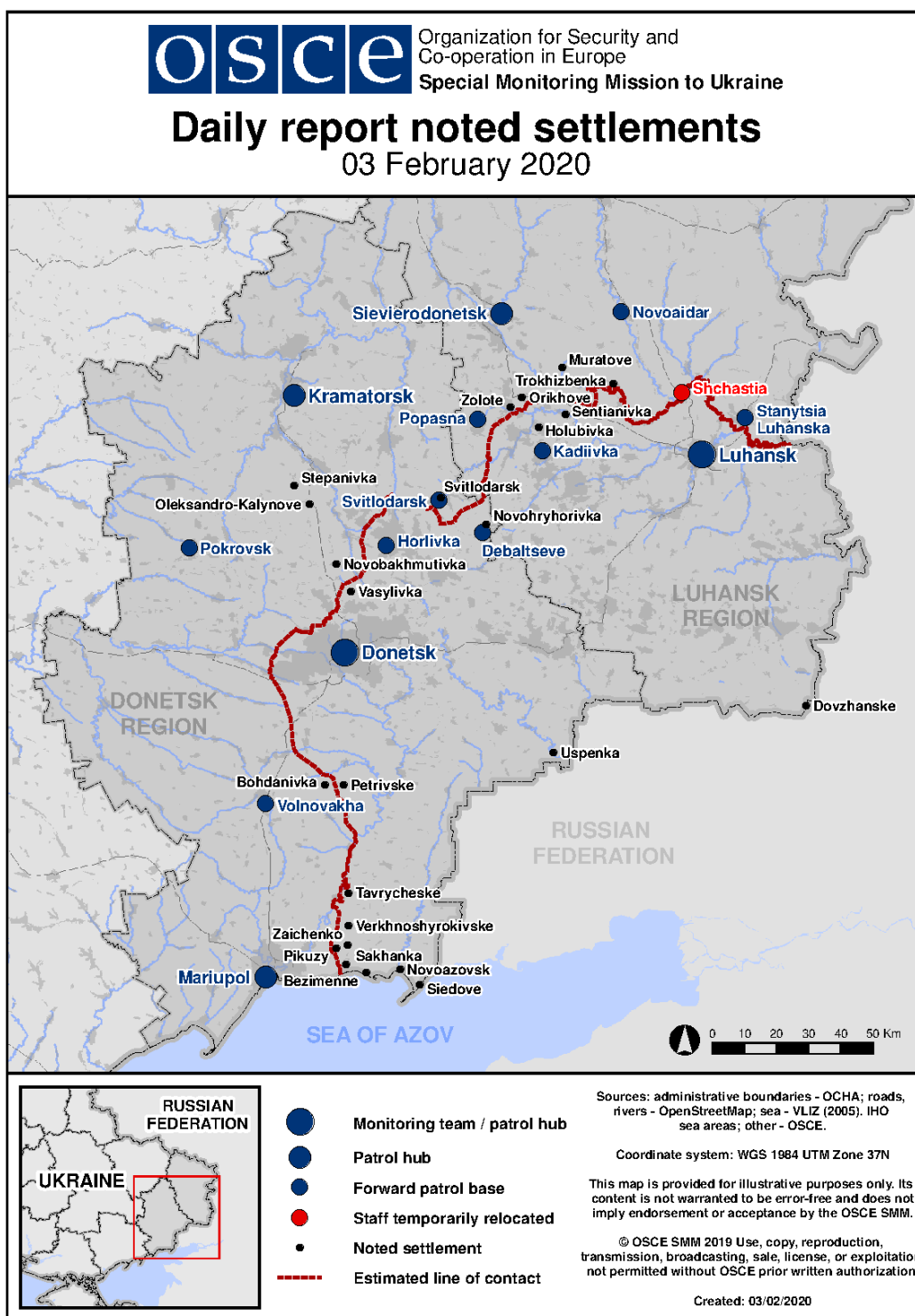
| | | | | | | | |
|---|------------|----------|-----|--------------|--|------------------------|--------------------|
| | 3-5km ESE | Recorded | 1 | Muzzle flash | Assessed as outside the disengagement area | N/K | 31-Jan, 23:55 |
| | 3-5km E | Recorded | 3 | Projectile | S to N (assessed as outside the disengagement area) | N/K | 1-Feb, 00:11 |
| | 3-5km ESE | Recorded | 1 | Explosion | Undetermined, assessed as outside the disengagement area | N/K | 1-Feb, 02:25 |
| | 3-5km E | Recorded | 1 | Projectile | SW to NE (assessed as outside the disengagement area) | N/K | 1-Feb, 02:25 |
| 2km S of Muratove (government-controlled, 51km NW of Luhansk) | 8-10km S | Heard | 16 | Explosion | Undetermined | N/K | 1-Feb, 09:46-10:06 |
| | 3-4km SE | Heard | 8 | Shot | | Small arms | 1-Feb, 10:00-10:02 |
| 2km W of Orikhove Donetske (government-controlled, 44km NW of Luhansk) | 5-7km S | Heard | 15 | Explosion | Undetermined | N/K | 1-Feb, 10:14-10:16 |
| | 3-4km S | Heard | 4 | Burst | | Small arms | 1-Feb, 10:14-10:16 |
| Holubivske (non-government-controlled, 51km W of Luhansk) | 2-3km W | Heard | 3 | Explosion | Undetermined | N/K | 1-Feb, 10:46-11:38 |
| | 2-3km W | Heard | 3 | Burst | | HMG | 1-Feb, 10:46-11:38 |
| | 2-3km W | Heard | 8 | Burst | | Small arms | 1-Feb, 10:46-11:38 |
| | 2-3km W | Heard | 3 | Burst | Outgoing | Cannon (IFV, type n/k) | 1-Feb, 10:46-11:38 |
| | 2-3km W | Heard | 19 | Shot | Outgoing | Cannon (IFV, type n/k) | 1-Feb, 10:46-11:38 |
| | 2-3km W | Heard | 7 | Shot | | Small arms | 1-Feb, 10:46-11:38 |
| Trokhizbenka (government-controlled, 32km NW of Luhansk) | 6-7km SSW | Heard | 2 | Explosion | Undetermined | N/K | 1-Feb, 11:11 |
| 1.5km SW of Berezivske (non-government-controlled, 53km NW of Luhansk) | 2-3km NE | Heard | 23 | Explosion | Undetermined | N/K | 1-Feb, 11:53-12:21 |
| | 2-3km NW | Heard | 23 | Explosion | Undetermined | N/K | 1-Feb, 11:53-12:21 |
| | 2-3km N | Heard | 15 | Burst | | HMG | 1-Feb, 11:53-12:21 |
| | 2-3km N | Heard | 5 | Explosion | Undetermined | N/K | 1-Feb, 11:53-12:21 |
| | 2-3km NNW | Heard | 11 | Explosion | Undetermined | N/K | 1-Feb, 11:53-12:21 |
| NNE edge of Sentianivka (formerly Frunze, non-government-controlled, 44km W of Luhansk) | 6-10km WNW | Heard | 82 | Explosion | Undetermined | N/K | 1-Feb, 12:18-13:02 |
| | 6-10km WNW | Heard | 79 | Burst | | HMG | 1-Feb, 12:18-13:02 |
| | 6-10km WNW | Heard | 117 | Burst | | Small arms | 1-Feb, 12:18-13:02 |
| | 6-10km WNW | Heard | 14 | Shot | | Cannon (IFV, type n/k) | 1-Feb, 12:18-13:02 |

| | | | | | | | |
|---|---|-----------|------------|--------------|---|------------------------|--------------------|
| | 6-10km WNW | Heard | 38 | burst | | Cannon (IFV, type n/k) | 1-Feb, 12:18-13:02 |
| SMM camera in Avdiivka (government-controlled, 17km N of Donetsk) | 2-4km SE | Recorded | 1 | Projectile | WNW to ESE (also recorded by Oktiabr mine camera) | N/K | 1-Feb, 22:36 |
| SMM camera in Chermalyk (government-controlled, 77km S of Donetsk) | 2-4km SSE | Recorded | 13 | Projectile | WSW to ENE | N/K | 2-Feb, 03:02 |
| | 2-4km SSE | Recorded | 1 | Projectile | WNW to ESE | N/K | 2-Feb, 04:05 |
| | 2-4km SSE | Recorded | 2 | Projectile | WNW to ESE | N/K | 2-Feb, 05:11 |
| SMM camera at Donetsk Filtration Station (15km N of Donetsk) | 1.5-4km SSW | Recorded | 1 | Explosion | Undetermined (also recorded by Oktiabr Mine camera) | N/K | 1-Feb, 22:13 |
| | 1.5-4km SSW | Recorded | 1 | Projectile | NW to SE | N/K | 1-Feb, 22:13 |
| | 1.5-4km SSW | Recorded | 1 | Explosion | Impact (also recorded by Avdiivka and Oktiabr Mine cameras) | N/K | 1-Feb, 22:13 |
| | 2-4km SSW | Recorded | 1 | Projectile | WNW to ESE (also recorded by Avdiivka and Oktiabr mine cameras) | N/K | 2-Feb, 00:09 |
| | 500-800m S | Recorded | 2 | Muzzle flash | | N/K | 2-Feb, 05:53 |
| | 0.5-0.8km S | Recorded | 2 | Projectile | N to S (subsequent to previous event) | N/K | 2-Feb, 05:53 |
| | SMM camera at entry-exit checkpoint in Hnutove (government-controlled, 84km S of Donetsk) | 1-3km ESE | Recorded | 14 | Projectile | N to S | N/K |
| 1-3km ESE | | Recorded | 2 | Explosion | Undetermined | N/K | 1-Feb, 20:14 |
| 1-3km ESE | | Recorded | 5 | Muzzle flash | | N/K | 1-Feb, 20:15 |
| 1-3km ESE | | Recorded | 3 | Projectile | N to S | N/K | 1-Feb, 20:15 |
| 1-3km ESE | | Recorded | 1 | Projectile | NW to SE | N/K | 1-Feb, 20:15 |
| 1-3km ESE | | Recorded | 1 | Projectile | W to E | N/K | 1-Feb, 20:15 |
| 1-3km ESE | | Recorded | 6 | Projectile | N to S | N/K | 1-Feb, 20:16 |
| 1-3km ESE | | Recorded | 3 | Projectile | W to E | N/K | 1-Feb, 20:16 |
| 1-3km ESE | | Recorded | 4 | Muzzle flash | | N/K | 1-Feb, 20:16 |
| 1-3km ESE | | Recorded | 4 | Muzzle flash | | N/K | 1-Feb, 20:17 |
| 1-3km ESE | | Recorded | 3 | Projectile | N to S | N/K | 1-Feb, 20:17 |
| 1-3km ESE | | Recorded | 1 | Explosion | Impact (subsequent to previous event) | N/K | 1-Feb, 20:17 |
| 1-3km ESE | | Recorded | 3 | Muzzle flash | | N/K | 1-Feb, 20:18 |
| 1-3km ESE | | Recorded | 4 | Projectile | N to S | N/K | 1-Feb, 20:18 |
| 1-3km ESE | | Recorded | 4 | Projectile | SW to NE | N/K | 1-Feb, 20:18 |
| 1-3km ESE | | Recorded | 1 | Explosion | Undetermined | N/K | 1-Feb, 20:34 |
| 2-4km ESE | | Recorded | 1 | Projectile | WSW to ENE | N/K | 2-Feb, 00:57 |
| 2km E | | Recorded | 1 | Explosion | Undetermined | N/K | 1-Feb, 20:12 |
| 2km E | | Recorded | 1 | Projectile | NW to SE | N/K | 1-Feb, 20:12 |
| 2km ESE | | Recorded | 1 | Projectile | SW to NE | N/K | 1-Feb, 20:23 |
| 2km ENE | Recorded | 2 | Explosion | Undetermined | N/K | 1-Feb, 22:40 | |
| 1-3km ENE | Recorded | 2 | Projectile | NW to SE | N/K | 2-Feb, 03:18 | |
| SMM camera at Oktiabr mine (non-government-controlled, 9km NW of Donetsk city center) | 3-6km NE | Recorded | 2 | Explosion | Undetermined, also recorded by Avdiivka Camera | N/K | 1-Feb, 22:25 |
| | 3-5km NE | Recorded | 6 | Projectile | WNW to ESE (also recorded by Avdiivka camera) | N/K | 1-Feb, 23:31 |
| SMM camera 1km SW of Shyrokyne (government- | 5-7km N | Recorded | 1 | Explosion | Undetermined (also recorded | N/K | 1-Feb, 20:14 |

| | | | | | | | |
|---|---|----------|-------------|------------------|--------------------------|--------------|--------------------|
| controlled, 100km S of Donetsk) | | | | | by Hnutove EECPC camera) | | |
| | 2-4km NNE | Recorded | 6 | Projectile | E to W | N/K | 1-Feb, 22:39 |
| | 5-7km N | Recorded | 9 | Projectile | E to W | N/K | 2-Feb, 01:36 |
| About 4km, NW of Debaltseve (non-government-controlled, 58km NE of Donetsk) | 2-3km N | Heard | 3 | Burst | | HMG | 2-Feb, 10:53 |
| | 1km NW | Heard | 3 | Shot | | Small arms | 2-Feb, 10:53 |
| SW of Novohryhorivka (non-government-controlled, 61km NE of Donetsk) | 2-4km NW | Heard | 20 | Explosion | Undetermined | N/K | 2-Feb, 08:53-08:55 |
| | 2-4km NW | Heard | 125 | Shot | | HMG | 2-Feb, 08:58-09:00 |
| | 2-4km NW | Heard | Uncountable | Shots and bursts | Uncountable/overlapping | Small arms | 2-Feb, 08:58-09:00 |
| | 2-4km NW | Heard | 35 | Explosion | Undetermined | N/K | 2-Feb, 08:58-09:00 |
| | 2-4km NW | Heard | 215 | Shot | | HMG | 2-Feb, 09:02-09:04 |
| | 2-4km NW | Heard | 15 | Burst | | HMG | 2-Feb, 09:05-09:07 |
| | 2-4km NW | Heard | 35 | Shot | | HMG | 2-Feb, 09:05-09:07 |
| | 2-4km NW | Heard | 6 | Explosion | Undetermined | N/K | 2-Feb, 09:05-09:07 |
| | 2-4km NW | Heard | 2 | Explosion | Undetermined | N/K | 2-Feb, 09:07-09:10 |
| | 2-4km NW | Heard | 45 | Burst | | HMG | 2-Feb, 09:07-09:10 |
| | 2-4km NW | Heard | 15 | Shot | | HMG | 2-Feb, 09:07-09:10 |
| | 2-4km NW | Heard | 52 | Explosion | Undetermined | N/K | 2-Feb, 09:10-09:30 |
| | 2-4km NW | Heard | 155 | Burst | | HMG | 2-Feb, 09:10-09:30 |
| | 2-4km NW | Heard | 257 | Shot | | HMG | 2-Feb, 09:10-09:30 |
| | 2-4km NW | Heard | 108 | Explosion | Undetermined | N/K | 2-Feb, 09:30-09:54 |
| | 2-4km NW | Heard | 400 | Shot | | HMG | 2-Feb, 09:30-09:54 |
| | 2-4km NW | Heard | 400 | Shots and bursts | | Small arms | 2-Feb, 09:30-09:54 |
| | 2-4km NW | Heard | 39 | Explosion | Undetermined | N/K | 2-Feb, 10:11-10:15 |
| | 2-4km NW | Heard | 5 | Burst | | HMG | 2-Feb, 10:11-10:15 |
| | Svitlodarsk (government-controlled, 57km NE of Donetsk) | N/K | Heard | 7 | Explosion | Undetermined | N/K |
| N/K | | Heard | 2 | Explosion | Undetermined | N/K | 1-Feb, 22:48 |
| N/K | | Heard | 3 | Explosion | Undetermined | N/K | 1-Feb, 23:39-23:43 |
| N/K | | Heard | 2 | Explosion | Undetermined | N/K | 1-Feb, 23:57-23:59 |
| 3-4km SSE | | Heard | 2 | Explosion | Undetermined | N/K | 2-Feb, 09:30 |
| 3-4km SSE | | Heard | 4 | Explosion | Undetermined | N/K | 2-Feb, 12:33 |
| 3-4km SSE | | Heard | 4 | Burst | | HMG | 2-Feb, 14:25 |
| 3-4km SSE | | Heard | 2 | Explosion | Undetermined | N/K | 2-Feb, 14:59 |
| 3-4km SSE | | Heard | 3 | Explosion | Undetermined | N/K | 2-Feb, 15:40 |
| 3-4km SSE | | Heard | 3 | Explosion | Undetermined | N/K | 2-Feb, 16:29 |
| 3-4km SSE | | Heard | 13 | Burst | | HMG | 2-Feb, 16:32 |
| 3-4km SSE | | Heard | 7 | Burst | | HMG | 2-Feb, 16:47 |
| 3-4km SSE | | Heard | 2 | Explosion | Undetermined | N/K | 2-Feb, 16:58 |

| | | | | | | | |
|---|------------|----------|----|--------------------|---|----------------------|--------------------|
| | 3-4km SSE | Heard | 15 | Burst | | HMG | 2-Feb, 17:08 |
| | 3-4km SSE | Heard | 5 | Explosion | Undetermined | N/K | 2-Feb, 17:34 |
| | 3-4km SSE | Heard | 26 | Burst | | HMG | 2-Feb, 17:41 |
| Horlivka (non-government-controlled, 39km NE of Donetsk) | 4-5km W | Heard | 2 | Explosion | Undetermined | N/K | 2-Feb, 06:35-06:36 |
| | 3-4km NW | Heard | 2 | Burst | Undetermined | HMG | 2-Feb, 06:36-06:37 |
| | 3-4km W | Heard | 4 | Explosion | Undetermined | N/K | 2-Feb, 07:01-07:02 |
| | 4-5km NW | Heard | 1 | Burst | | HMG | 2-Feb, 10:23 |
| About 500m NE of Kamianka (government-controlled, 20km N of Donetsk) | 1-2km SSW | Heard | 15 | Burst | | Small arms | 2-Feb, 10:05 |
| | 1-2km SSW | Heard | 20 | Burst | | Small arms | 2-Feb, 10:15 |
| Pivnichne (government-controlled, 44km north-east of Donetsk) | 1-3km SE | Heard | 3 | Burst | | Small arms | 2-Feb, 10:23 |
| | 1-3km SE | Heard | 1 | Shot | | Small arms | 2-Feb, 10:23 |
| | 1-3km SW | Heard | 1 | Explosion | Undetermined | N/K | 2-Feb, 10:30 |
| | 1-3km SE | Heard | 1 | Explosion | Undetermined | N/K | 2-Feb, 10:38 |
| SMM camera in Kriakivka (government-controlled, 38km NW of Luhansk) | 3-5km SSW | Recorded | 1 | Illumination flare | In vertical flight | N/K | 1-Feb, 20:27 |
| | 2-4km SSW | Recorded | 2 | Projectile | In vertical flight | N/K | 2-Feb, 17:44 |
| 1.5km NW of Peredilske (government-controlled, 24km NW of Luhansk) | 8-10km WNW | Heard | 22 | Explosion | Undetermined | Artillery (type N/K) | 2-Feb, 10:20-10:45 |
| 1.3km N of Trokhizbenka (government-controlled, 32km NW of Luhansk) | 5-7km WSW | Heard | 46 | Explosion | Undetermined | Artillery (type N/K) | 2-Feb, 10:28-11:03 |
| | 5-7km WSW | Heard | 84 | Burst | | HMG | 2-Feb, 10:28-11:03 |
| | 3-5km W | Heard | 82 | Explosion | Undetermined | Artillery (type N/K) | 2-Feb, 11:13-11:30 |
| | 3-5km W | Heard | 86 | Burst | | HMG | 2-Feb, 11:13-11:30 |
| N edge of Vesela Hora (non-government-controlled, 16km N of Luhansk) | 8-10km WNW | Heard | 13 | Explosion | Undetermined | N/K | 2-Feb, 10:39-10:45 |
| | 8-10km WNW | Heard | 2 | Burst | | N/K | 2-Feb, 11:18-11:19 |
| N edge of Sentianivka (formerly Frunze, non-government-controlled, 44km W of Luhansk) | 6-10km WNW | Heard | 1 | Explosion | Undetermined | N/K | 2-Feb, 10:42-11:00 |
| | 6-10km WNW | Heard | 1 | Burst | | HMG | 2-Feb, 10:42-11:00 |
| Heivka (government-controlled, 27km NW of Luhansk) | 8-10km W | Heard | 4 | Explosion | Undetermined | Artillery (type N/K) | 2-Feb, 11:32 |
| 2.8km SW of Yuzhne Lomuvatka (non-government-controlled, 60km W of Luhansk) | 5-7km NW | Heard | 31 | Shot | | IFV (BMP-1) | 2-Feb, 12:21-12:23 |
| E of Stanytsia Luhanska (government-controlled, 16km NE of Luhansk) | 4-5km WSW | Heard | 2 | Explosion | Undetermined (assessed as outside the disengagement area) | | 2-Feb, 15:38 |
| | 3-5km WSW | Heard | 5 | Burst | Assessed as outside the disengagement area | | 2-Feb, 15:38 |

Map of Donetsk and Luhansk regions¹¹



¹¹ The SMM is deployed to ten locations throughout Ukraine – Kherson, Odessa, Lviv, Ivano-Frankivsk, Kharkiv, Donetsk, Dnipro, Chernivtsi, Luhansk and Kyiv – as per Permanent Council Decision 1117 of 21 March 2014. This map of eastern Ukraine is meant for illustrative purposes and indicates locations mentioned in the report, as well as those where the SMM has offices (monitoring teams, patrol hubs, and forward patrol bases) in Donetsk and Luhansk regions. (In red: a forward patrol base from which SMM staff has temporarily relocated based on recommendations of security experts from participating States as well as SMM security considerations. The SMM uses the premises during daylight hours and patrols in this settlement during daylight hours, as well).